



3 BEDROOMS /3 BATHROOMS

VILLAGE FACING BALCONY WITH
MOUNTAIN VIEWS

WOOD-BURNING FIREPLACE IN LIVING
ROOM

FLAT ACCESS WITH ELEVATOR/LIFT

TWO-FLOOR PENTHOUSE

PARTIAL MATTERHORN VIEW

BUSSTOP VERY CLOSE BY



**PENTHOUSE
PARROT**

**ZERMATT
SWITZERLAND**

**6
GUESTS**

Sleeps 6 with 2 double/twin bedrooms, 1 bunk bedroom and 3 bathrooms

Bedroom 1, double or Austrian twins, en-suite bathroom

Bedroom 2, bunk bedroom, own bathroom

Bedroom 3, double or Austrian twins, en-suite bathroom



The Parrot Penthouse apartment with a spacious 135m² is spread across the two top floors of a stylish chalet building with elevator access. It is set on a hillside with glorious views over the Zermatt village, and also has a partial Matterhorn view. The closest mountain lift station is the Matterhorn Express, an easy 600m walk, and there is also a bus stop just by the main entrance. The nearest shops are 350m away.

The Parrot Penthouse has a light and modern airy feel to, with a high sloping wooden beamed roof and big floor to ceiling windows. These give you a wonderful panorama over the Dom and Täschhorn mountain peaks, which glow in the sunset. At your feet is the charming village of Zermatt with its twinkling lights at night. During the day you can also admire the mature silver birch and pine trees from the wide balcony.

The superbly equipped modern designer kitchen is open plan, giving onto the dining area with its long wooden table and generous seating. The living area has a wood burning fireplace.

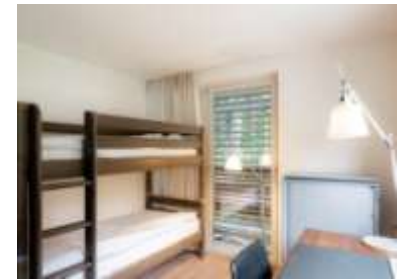
The main floor has a double bedroom with en-suite shower / WC and a desk. The bunk-bedroom with a shower / WC opposite is also on this floor. This bedroom has its own balcony.

The other double bedroom is on the top floor (accessed by a spiral staircase), with an en-suite bathroom containing a large bath-tub and a separate shower room / WC. This bedroom has its own balcony.

There is a washing machine in the apartment. The chalet building has also a ski-room and a laundry room

The other double bedroom is on the top floor (accessed by a spiral staircase), with an en-suite bathroom containing a large bath-tub and a separate shower room / WC. This bedroom has its own balcony.

There is a washing machine in the apartment. The chalet building has also a ski-room and a laundry room



Concierge Services: Arrival in Zermatt, Resort Care, Transfers, Equipment rental, Ski school and guides, Restaurants, Child care, Health & Beauty and more..

Services

Offered on a Self-Catered basis with Concierge Services

Exclusive use of the chalet and its facilities

Bed linen, towels, guest amenities on arrival

Welcome and assistance from the staff pre-arrival

In resort assistance from the concierge team

Transfer to and from chalet from Zermatt train station on arrival and departure day*

Welcome basket*

Cleaning on departure

Daily cleaning and linen/towel change on request

Free access to high-speed wireless internet

*when booking 5 nights or more

